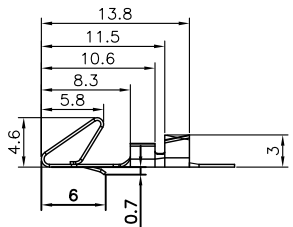


| REV. | DESCRIPTION  | DRAWN         | CHECKED | APPROVED     |
|------|--------------|---------------|---------|--------------|
| A    | NEW RELEASE  | LL 10/09/06   | ~       | LJC 10/09/06 |
| B    | 增加pin数方向     | LL 12/21/06   | ~       | LJC 12/21/06 |
| C    | ADD P/N CODE | JLZ 01/30/15' | ~       |              |

Female Terminal

T-DS1072- S C 6 0 0

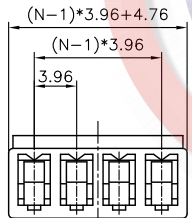
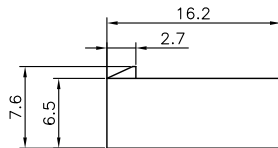


Contact Plating  
6: Tin

Female Terminal

| Wire Range                      | O.D of Wire |         |
|---------------------------------|-------------|---------|
| Section Area (mm <sup>2</sup> ) | AWG#        | mm      |
| 0.2~0.75                        | 24~18       | 1.3~2.8 |

Female Housing



I-DS1072- S C T 0 X

No. of contact  
02~13

NOTES:

1. MAIN SPECIFICATIONS

- . Housing material: NYLON 66
- . Wire range: AWG#24~#18
- . Rated voltage: 250V
- . Rated current: 3A
- . Contact resistance: ≤ 30mΩ
- . Insulation resistance: ≥ 1000MΩ
- . Withstanding voltage: 500V,AC 1 minute
- . Temperature range: -25 ~ +85°C
- . Recommend PC board thickness:1.6mm

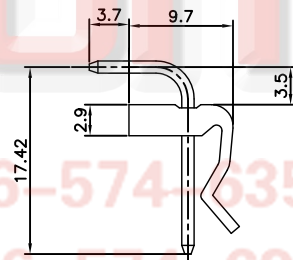
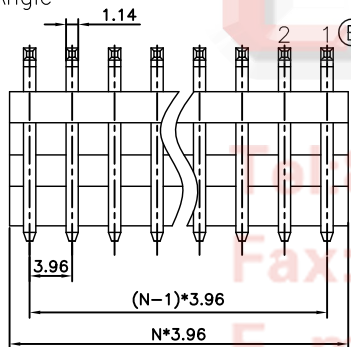
2. PRODUCT NUMBER CODE:

DS1072 -

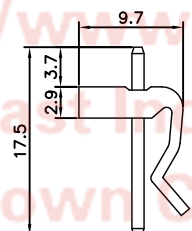
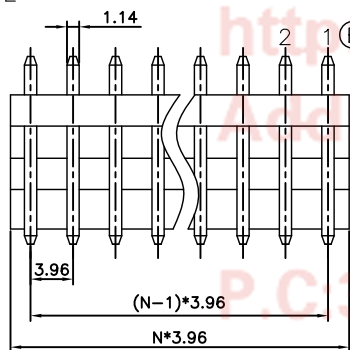
X X X X X

- Contact Plating  
6: Tin  
8: Full gold flash
- Housing Color  
T: Transparent
- Mounting type  
R: Right Angle  
V: V/T type
- Connector type  
M: Male
- No. of contact  
2 to 13

Male Right Angle




Male V/T TYPE



N=No. of contacts

| GENERAL TOLERANCE |       | ANGLE TOLERANCE  |              |
|-------------------|-------|------------------|--------------|
| X.                | ±0.60 | X.               | ±5°          |
| .X                | ±0.38 | .X               | ±3°          |
| .XX               | ±0.25 | .XX              | ±2°          |
| DRAWING TYPE      |       | CUSTOMER         |              |
| SCALE             |       | 1:1              | SHEET 1 OF 1 |
| DRAWING NO.       |       | C-DS1072-XXXXX-C |              |

| PROJECTION | TITLE                        |
|------------|------------------------------|
| UNITS      | P.C.B CONNECTOR Pitch 3.96mm |
| SHEET SIZE | SERIES DS1072 SERIES         |

 **晨翔电子有限公司**  
**CONNFLY CONNFLY ELECTRONIC CO. LTD**